

---



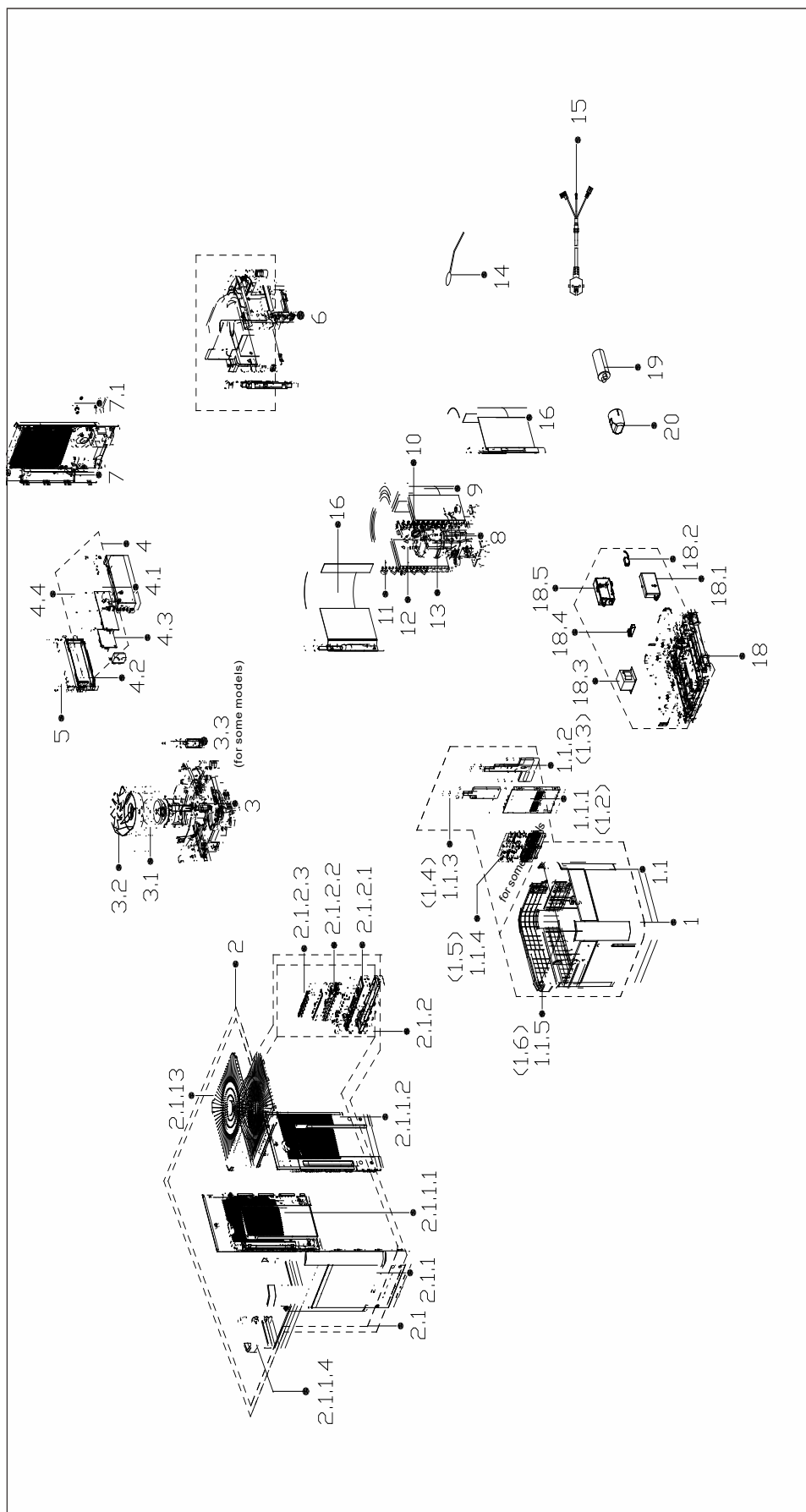
---

**Portable Cube Dehumidifier:**  
BCDP-50A

Parts List



# EXPLODED VIEW



# REPLACEMENT PARTS

| Location | Part Name   | Quantity | Part No.       |
|----------|---|----------|----------------|
| 1        | Water tank subassembly  | 1        | 12120100006528 |
| 1.1      | Water tank  | 1        | 12120100006527 |
| 1.2      | Cover of Dobber   | 1        | 12120100006529 |
| 1.5      | installation bracket Subassembly                                      | 1        | 12120100006497 |
| 1.6      | Handle of water tank  | 1        | 12120100006524 |
| 2        | Front panel assembly  | 1        | 12120100A20098 |
| 2.1      | Front panel assembly  | 1        | 12120100A19817 |
| 2.1.1    | Front panel subassembly   | 1        | 12120100006801 |
| 2.1.1.1  | Left supporter  | 1        | 12120100006517 |
| 2.1.1.2  | Right side plate  | 1        | 12120100006802 |
| 2.1.1.3  | Top cover   | 1        | 12120100006518 |
| 2.1.1.4  | Handle  | 1        | 12120100006520 |
| 2.1.2    | Display box subassembly   | 1        | 17220100A04524 |
| 2.1.2.1  | display box   | 1        | 12120100006482 |
| 2.1.2.2  | Display box subassembly   | 1        | 17120100003269 |
| 2.1.2.3  | Control panel subassembly   | 1        | 12120100006483 |
| 3        | Supporter assembly of fan motor                                       | 1        | 12120100006510 |
| 3.1      | Single phase asynchronous motor                                       | 1        | 11002012037594 |
| 3.2      | Axial flow fan  | 1        | 12100105001042 |
| 4        | Electronic control box subassembly                                    | 1        | 17220100001461 |
| 4.1      | Electronic control box subassembly                                    | 1        | 12120100006501 |
| 4.2      | Capacitor of fan motor  | 1        | 17400101000499 |
| 4.3      | Humidity sensor board module(plug-in)(double letter KSH-02BHS scheme) | 1        | 17120100000344 |
| 4.4      | Dehumidifier main control board subassembly                           | 1        | 17120100003329 |
| 5        | Cover of electronic control box subassembly                           | 1        | 12120100006507 |
| 6        | Middle partition board assembly                                       | 1        | 12120100006531 |
| 7        | Rear panel subassembly  | 1        | 12120100006508 |
| 7.1      | Drain Stopper   | 1        | 12600801000036 |
| 8        | Fixed speed rotary compressor   | 1        | 11103010019038 |
| 9        | Evaporator assembly   | 1        | 15820100000781 |
| 10       | Capillary assembly  | 1        | 15120100002347 |
| 11       | Condenser assembly  | 1        | 15820100000779 |
| 12       | Discharge pipe assembly   | 1        | 15120100002341 |
| 13       | Suction pipe assembly   | 1        | 15120100002345 |
| 14       | Pipe Temperature Sensor   | 1        | 11201007003439 |
| 15       | Power cord subassembly  | 1        | 17401202008407 |
| 16       | Air filter  | 2        | 12120100006533 |
| 18       | Chassis assembly  | 1        | 12120100006579 |
| 18.1     | plastic box   | 1        | 12120100006543 |
| 18.2     | Micro Switch  | 1        | 17400512000009 |
| 18.3     | Linear Transformer  | 1        | 11203103002179 |
| 18.4     | Magnetic switch   | 1        | 11201605000661 |
| 18.5     | plastic box   | 1        | 12101101000581 |
| 19       | Capacitor of compressor   | 1        | 17400103000060 |
| 20       | Capacitor box   | 1        | 12100601000106 |

---

Due to ongoing product improvements, specifications and dimensions are subject to change and correction without notice or incurring obligations. Determining the application and suitability for use of any product is the responsibility of the installer. Additionally, the installer is responsible for verifying dimensional data on the actual product prior to beginning any installation preparations.

Incentive and rebate programs have precise requirements as to product performance and certification. All products meet applicable regulations in effect on date of manufacture; however, certifications are not necessarily granted for the life of a product. Therefore, it is the responsibility of the applicant to determine whether a specific model qualifies for these incentive/rebate programs.

*Comfort-Aire*®

1900 Wellworth Ave., Jackson MI 49203 • Ph. 517-787-2100 • [www.marsdelivers.com](http://www.marsdelivers.com)

